

The Parish Church of St Catherine and St Paul, Hoddesdon

(Part of the New River Group Ministry).



Parish Profile 2023

SUMMARY

St Catherine and St Paul's Church is a very friendly and active church, located in the town centre of Hoddesdon - "The Church opposite Morrison's". We want to continue to reach out to the community, helping them grow with us in fellowship and worship. We have recently developed some Fresh Expressions activities which have attracted local young families. The challenge now is to draw them into the fellowship and to help them to grow in faith, while at the same time supporting and encouraging those who have been faithfully and actively involved with the church for decades.

WE ARE SEEKING A VICAR with the following qualities:

- Someone who can help us shape a vision to grow younger and more in numbers, helping us navigate the changes we will need to make for that to happen.
- Someone who is good at generating contacts with local communities and can help us go on growing in courage to share our faith outside the church.
- Someone with a strong desire to engage with the church school, who can help us use those relationships to grow our children's ministry.
- A bible-based teacher and person of prayer who can help people of all ages, backgrounds and abilities to grow in faith and discipleship.
- The skill to recognise and encourage the gifts of all and to develop new leaders.
- Able to embrace different styles of worship within our one church community.
- Values and engages with all age-groups from the very young to the very old – pastorally gifted, friendly, and welcoming, supporting members of the community through life events.
- Comfortable with new technologies.

WHAT WE WILL OFFER

- An opportunity to share the spiritual journey.
- An active and talented congregation, with volunteers who work well together in teams.
- A local community that is cooperative and friendly towards the church.
- Good relationships with other local churches.
- A modern, four-bedroomed detached house, close to the park and a short walk to the church.

THE VISION

Within our Mission Action Plan, we have stated that our Vision is the following:

At St Catherine and St Paul's we will be a spiritual hub, reaching out to all, worshipping Jesus Christ and radiating the wonder of God through the power of the Spirit.

Our **Mission Statement** is: "Our Church exists to worship God; to lead people to Christ; to build a loving Christian community; and to serve a world in need."

Our current **priorities** are:

- Grow a younger and more diverse congregation.
- Deepen relationships with people in need in the community.
- Deepen the spiritual life of the church.
- Enable the church to go further in addressing the issue of climate change and care of creation.
- Develop the church building as a flexible community space which supports us in achieving our vision.

Our **values** are:

We seek to be a community that is:

- Generous in love
- Attentive in prayer
- Courageous in hope
- Accepting of others

THE BROADER CONTEXT

St Catherine's and St Paul's Church is situated in a key position within Hoddesdon. It is very visible opposite Morrison's and just off the High Street. It is often identified as "The Church opposite Morrison's".

Hoddesdon is a vibrant and active town in the Lea Valley. The population is growing, as new houses are being built in both the town centre and in High Leigh Garden Village, a development of about 500 homes within the parish boundary. The total population of the town is currently around 22,000, and that of the Parish is about 10,000. There is a good spread of ages within the town, with new young families moving in.

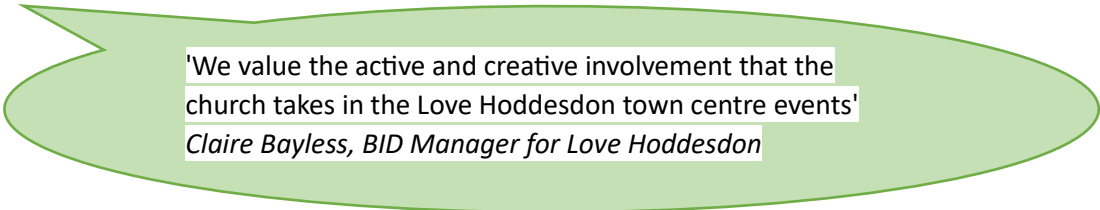
The core population is quite stable. Many of the younger people have grown up in the area after their parents or grandparents moved to Hoddesdon during phases of expansion. There is a well-established Italian (mainly Sicilian) community in the town, and smaller Greek, Cypriot, Turkish and Polish communities.

While the overall statistics for Hoddesdon indicate that most people have adequate resources to live comfortably, this masks the fact that there are individuals and families who are struggling financially. There are also many across the age-groups who struggle with mental health issues, particularly since Covid.

Crime levels within the town are below the national average.

There are some historic pubs in Hoddesdon, as it used to be a coaching stop for people travelling between London and Cambridge. There is now also a strong coffee shop and restaurant (Italian, Asian, Chinese and Turkish) presence in the town, and a developing evening economy. There is also a market on Wednesdays and Fridays, which brings people in from neighbouring towns.

Hoddesdon is a Business Improvement District (BID), and Love Hoddesdon coordinates many town centre events which are hugely popular, some (such as Hoddesdon Loves Christmas) bringing thousands of people into the town.



'We value the active and creative involvement that the church takes in the Love Hoddesdon town centre events'
Claire Bayless, BID Manager for Love Hoddesdon

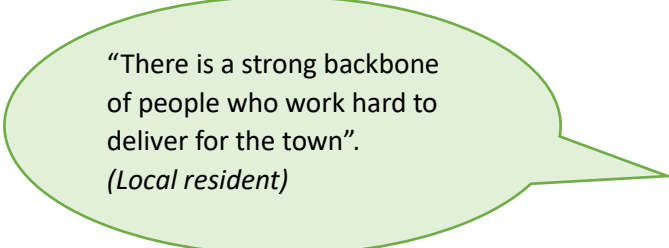
There is a lovely park close to the vicarage called Barclay Park, and plenty of other walks in the area eg through the Lea Valley, Broxbourne Woods, and down the New River which runs from Ware into London. There is an RSPB Nature Reserve in nearby Rye Park called Rye Meads.

Hoddesdon is in the Borough of Broxbourne. Within the Borough are a number of industrial areas and commercial offices. Many people in the town commute to London to work.

There are good train links from Hoddesdon into London, Cambridge and Stanstead airport from nearby Broxbourne Station. It also has good road links via the A10 to Cambridge in the north and to the M25 in the south.

- **Leisure activities**

There are many people with energy, drive and initiative in Hoddesdon, and this is demonstrated by the large number of different groups and organisations which are running successfully. These include arts and craft groups, music groups, dance and drama, cultural and historical groups (including Hoddesdon's own Lowewood Museum), toddler groups, sports groups, and cadets, scouts and guides.



“There is a strong backbone of people who work hard to deliver for the town”.

(Local resident)

- **New River Group**

Following a Pastoral Measure of the Church Commissioners, the New River Group Ministry was established in 2007. The Group comprises the three parishes of: Broxbourne (St Augustine's) with Wormley (St Laurence's), Hoddesdon (St Catherine and St Paul's), and Rye Park (St Cuthbert's). Members of the Group Ministry aim to support one another in prayer and ministry, to develop common areas of working, and to share resources whilst retaining independence as separate and distinct parishes. The ministers are Incumbents of the individual parishes, but each has the authority to perform in the area of every parish in the Group.

- **Churches Together in Hoddesdon, Broxbourne and Wormley**

There is a strong Churches Together group which includes all the churches in Hoddesdon, Broxbourne and Wormley. A joint service of Christian Unity is held in January in a different church each year. The churches work together to produce an Act of Witness in Hoddesdon Town Centre on Good Friday each year. Churches Together supports Hoddesdon Loves Christmas by taking part in the parade and putting on a stall promoting the Christmas story. Churches Together also supports the community through a well-established Foodbank, the Hear4U Listening Team, Bereavement Support, Warm Welcome Spaces, Young Life and support for asylum seekers.

- **St Albans Diocese**

Hoddesdon Parish Church is one of over 600 Parish Churches in the Diocese, which was created in 1877, and encompasses the Counties of Bedfordshire and Hertfordshire, as well as part of the London Borough of Barnet. It is overseen by Bishop Alan, who is also leader of the Lords Spiritual in the House of Lords.

The Diocese comprises:

- Two Suffragan Bishops - Bishop Jane of Hertford is our 'local' Bishop;
- Three Archdeacons - we are in the Archdeaconry of Hertford, with Archdeacon Janet;
- 20 Deaneries - we are in Cheshunt Deanery but are not currently represented on Cheshunt Deanery Synod.



- **Church school**

St Catherine's Primary School is a Church of England voluntary controlled school in the parish, which has strong links with the church. Three church members are on the Board of Governors.

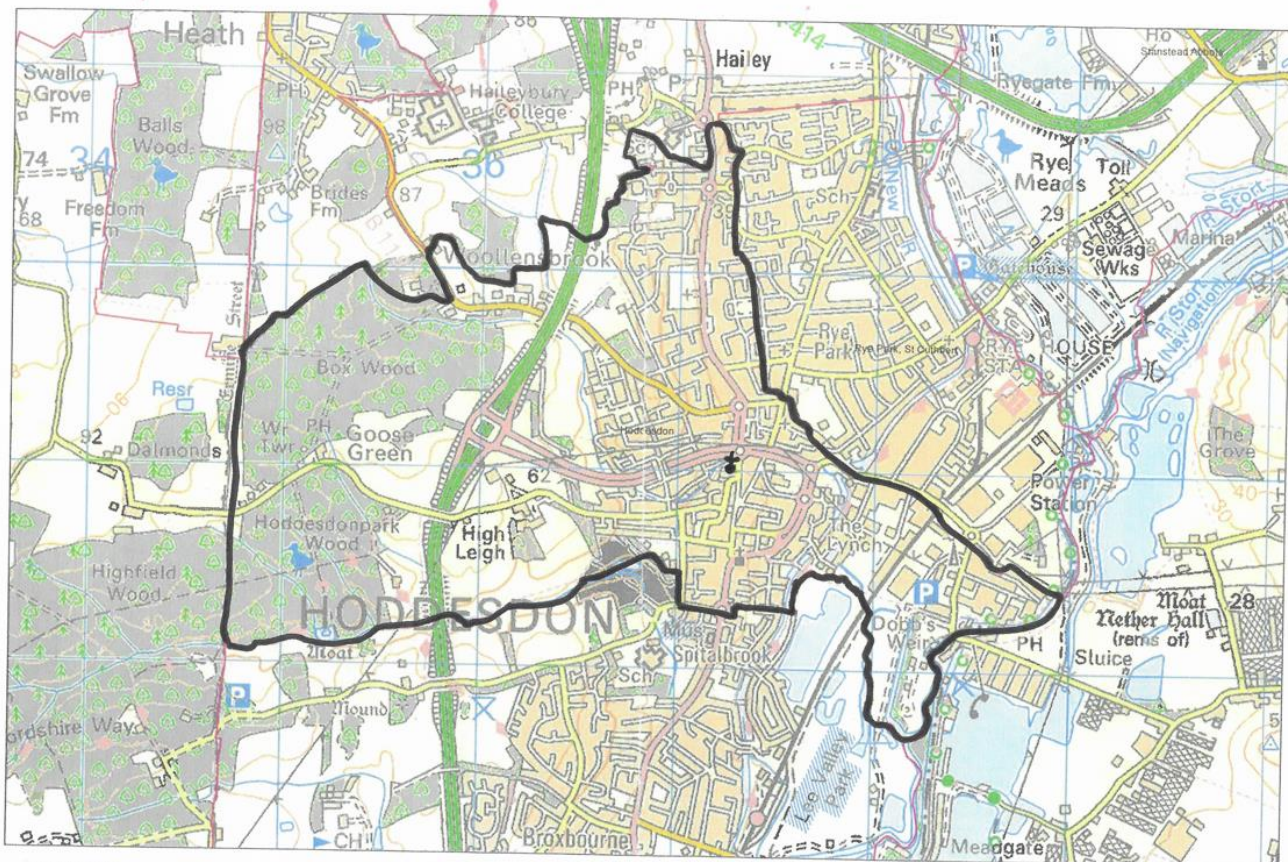
"St Catherine's School enjoys working closely with St Catherine and St Paul's Church, through Collective Worship, Messy church, Prayer Spaces and other activities, and we look forward to continuing that strong relationship through the new vicar". *Dorothy Marlow (Headteacher, St Catherine's School)*.



- **All Nations Christian College**

All Nations Christian College is 10 minutes' drive away from the church, and good relationships have been made with students and staff there.

ABOUT THE PARISH



Hoddesdon
2016

Digital map from Dotted Eyes. Reproduced by permission of Ordnance Survey on behalf of HMSO.
© Crown copyright and database rights 2016. All rights reserved.
Ordnance Survey number 100019918

The parish includes Hoddesdon town centre and some of the surrounding housing estates. High Leigh Garden Village is an area of new housing in the north of the parish, some of which is already occupied, and some of which is still being built. There are also areas of countryside within the parish, including some beautiful woods and the New River.

- **Schools**

There are three primary schools within the parish. The church works with both St Catherine's C of E Primary School and Westfield School. There is also St Augustine's RC Primary School. There are two secondary schools in Hoddesdon, Robert Barclay Academy and John Warner School. They are outside the parish boundary, but the church still works with them.

- **High Leigh Christian Conference Centre**

High Leigh Christian Conference Centre is within the parish, and good links have been forged with it over the years.

- **Chadwick Care Home**

The Chadwick Care Home is within the parish, and a monthly service of Christian worship is held there, supported by people from St Cuthbert's Church, St Catherine and St Pauls Church and Hoddesdon Baptist Church. Other care facilities in the Parish include Rose Vale Care Home and Brocket Road Day Care.



"I felt the kindest when I was writing a card for the residents of the Chadwick because I know someone is going to receive it." (*Student, Year 5, St Catherine's School*).

ABOUT THE CHURCH

CHURCH LEADERS, EMPLOYEES AND TEAMS

Currently, we have the following leaders, employees and voluntary teams supporting the work of the church:

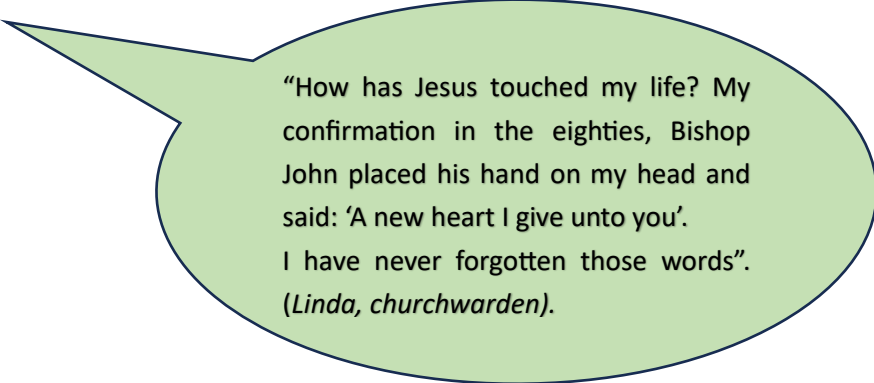
- Administrator (employed part-time)
- Two Churchwardens
- Family Link Worker (employed part-time) with a voluntary Fresh Expressions team
- PCC Secretary
- Treasurer
- Safeguarding Officer
- Music Leader, Organist, and music team
- Pastoral Enabler with a Pastoral Care Team
- Lay Leaders of Worship (three)
- Home group leaders (two)
- Toddler group leaders and team
- Home Communion team
- Flower Ministry team
- Hospitality team
- Bell-ringing team
- Gardening Group
- Cleaner (employed part-time)

THE CHURCH AS A WORSHIPPING PEOPLE

The congregation enjoys a mixed tradition of worship and has a strong culture of outreach. The Sunday services are at 10.30am. On the first Sunday of the month, we have Café Church, which is informal in style. At the other three services, there is all-age Communion. The music is a mix of traditional and modern. There is a choir and organist and a worship band.

There are 99 people currently on the electoral roll, with an average of 60 people coming for the Sunday service each week. Most congregation members are aged over 50, with just a few young people and young families.

In 2023 there have been eight Baptisms and one Confirmation. From January to October 2023, there have been 13 funerals, eight held in church and five held at the cemetery or crematorium. During the past three years, there have been eight weddings in the church.



“How has Jesus touched my life? My confirmation in the eighties, Bishop John placed his hand on my head and said: ‘A new heart I give unto you’. I have never forgotten those words”.
(Linda, churchwarden).

A mid-week Holy Communion service is held each Wednesday at 10.00. It is much valued by a regular group of about 10 – 12 some of whom can’t come on a Sunday. The group is very supportive of each other and after the service enjoys fellowship over refreshments. If the vicar is away and we can’t get cover for Communion we have a service of Morning Prayer.

We have 4 People who go out to people’s homes to provide Home Communion for those who are housebound. They go in two teams of two people, once a month. Currently there are 4 people who receive Home Communion.

MINISTRY AND OUTREACH TO CHILDREN AND FAMILIES

As part of our vision for growing younger and more diverse, we have raised the funding for a Family Link Worker, who has now been with us for over two years. She has developed a team of about 10 volunteers from the church who work with her in various Fresh Expressions activities, and as a result we have contact with over 80 families, who we are able to link with regularly.

- **Messy Church**

We have been holding monthly, term-time Messy Church in St Catherine’s School since November 2021. There are approximately 15 regular families with some others who come on occasion. Most families are un-churched. We base our Messy Church on the Messy Church values of: Christ-Centred, All-Age, Creativity, Hospitality, and Celebration. Good relationships are forming. We see this as a Fresh Expression of Church.



At messy church
there are lots
of activities,
you also get
a DIhink. Shack and
Alice.

In Messy church
we tell stories and
do fun Activities.
Tom James

- **Collective worship at the school.**

A small church team leads Collective Worship for all school years once a week in St Catherine's School. There is strong Christian teaching using the Roots and Fruits material which includes bible passages. The school attends church for their own service at Christmas, Easter, and the end of the school year.

- **Other links with the schools and local nurseries**

The Family Link Worker is developing links with Westfield School through attending regular coffee mornings facilitated by the school's Family Support lead. There is an excellent relationship with Tiny Toes Nursery who regularly come to the church, including some parents, for a bible-based craft, short bible story, singing, and refreshments. St Catherine's Nursery have recently requested to come to the church and attended for the first time in December.

- **Early Birds Toddler Group**

There are many young families in the community with preschool aged children attending Early Birds Toddler group. Meeting twice weekly during term time, children enjoy a variety of play and craft combined with singing and hearing bible stories. The group is run by volunteers from the congregation who build good relationships with families, encouraging them to grow in Faith.



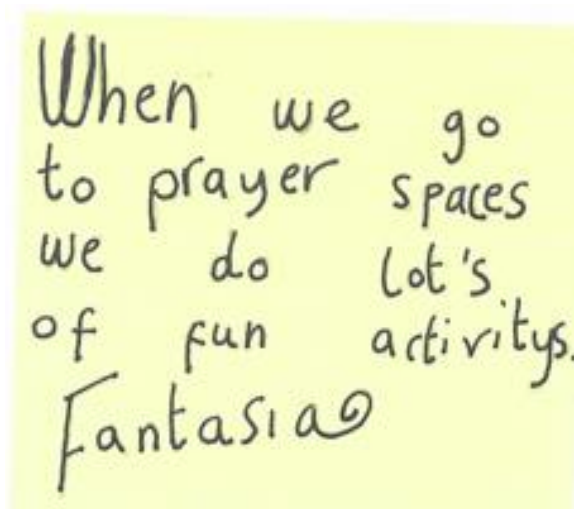
- **Wild Church in Welly Boots**

Wild Church in Welly Boots is based on Muddy Church principles which gives a way of connecting the local community with God through a space to gather and connect. We use our churchyard for a bible-based trail and crafts, finishing with refreshments. It is suitable for families with children aged 0-11 years. It usually attracts 50-70 adults and children, most of whom are un-churched. Some of the families also attend Messy Church, Tabletop Church, and Early Birds Toddler Group.



- **Prayer Spaces**

We have supported previous Prayer Spaces held at St Catherine's School. This October, we held our first Prayer Spaces at the church with the full co-operation of the school. There were over 300 children with their teachers over 4 days. The theme was 'Experience Harvest' based on the Fruit of the Holy Spirit. There were 6 stations around the church to take them on a journey of discovery. This was extremely well-received by the school who have requested that the church hosts Prayer Spaces again next year.



"I liked prayer space. Prayer space is good for feeling calm."
(Year 2 student, St Catherine's School)

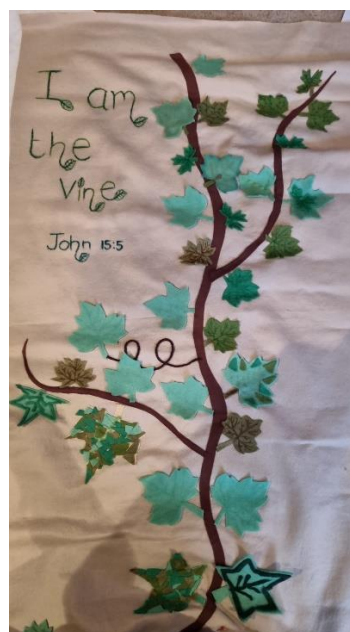
- **Families requesting Infant Baptism.**

Each family who requests Infant Baptism is given a home visit. This enables us to find out why they want their child baptised, where they are in the Christian journey, and to answer any questions. They are invited to attend some church services to meet the church family. This gives us an opportunity to form a relationship with the families and invite them to Tabletop Church and Toddler Group. We are finding recently that many of these families are returning to church after the Baptism, so we are setting up Children's Provision at Sunday morning services to be commenced in January 2024.

- **Tabletop Church**

This is a new venture with all the hallmarks of a Fresh Expression of Church which commenced July 2023 and occurs monthly in term-time. Tabletop Church is held in the local Morrison's Café with their full support. It is for adults who have attended Messy Church, Wild Church, or Baptism families who want to know a bit

more about following Jesus. The format is a bible-based craft, discussions, refreshments, and prayer. Friendships are being made. It is a small but dedicated group.



OTHER CHURCH ACTIVITIES

- **Home Groups**

There are currently two house-groups, one which meets weekly on a Wednesday morning and the other meeting fortnightly on a Thursday afternoon. The Bible topics studied are decided by each group. During Lent the house-groups are blended, come together with others from the congregation, and meet weekly. In 2023 we studied "The Bible Course" which was an eight-part series, covering the Bible from Genesis to Revelations and those who took part said how much they had enjoyed the sessions.

- **Prayer life**

St Catherine's and St Paul's is committed to developing a deep and meaningful prayer life. We meet regularly to pray, weekly every Monday Morning, and monthly on the first Saturday of each month. There is a small team who lead Intercessions during Sunday Worship. The Weekly Notices highlight areas of church life for prayer, including members of the congregation who are ill, mission partners and members of the electoral roll, on a rota basis.

- **Church Music**

The music team consists of an organist (paid an honorarium), a choir of 12-15 singers, a band with various instruments such as guitars, bass, oboe, harmonica, violin and occasionally drums. We meet for rehearsals on Friday evenings at 7.30pm and the band warm up before Sunday services when appropriate. Our choir is a member of East Herts Church Choirs (EHCCA) and several of our singers take part several times a year in Evensong or other special services in East Herts churches and occasionally at St Albans' Abbey.

- **Church Flowers**

The church has a friendly and enthusiastic team of flower arrangers who take it in turns to prepare a stand of flowers each week and who come together at Easter, Harvest Festival and Christmas to decorate the church. Church members sometimes have the flowers dedicated in memory of a loved one or to celebrate a special occasion.



- **The PCC**

Hoddesdon PCC currently meets 8 times a year and comprises 12 members:

- Two Churchwardens (one of whom is the Acting Lay Vice Chair)
- Treasurer (co-opted)
- PCC Secretary (elected)
- Five other elected lay members
- Three members who have filled 'Casual Vacancies' since the APCM in February.

NB At the APCM, the Electoral Roll totalled 97, so our total elected lay membership reduced from twelve to nine.

- **Safeguarding**

Our Parish Safeguarding Officer is Paula Clark. She has been in role since August 2019.

We have the following policies regarding safeguarding:

- General Safeguarding Policy
- Responding Well to Domestic Abuse
- Recruitment of Ex-Offenders

Our volunteers for church activities are safely recruited, DBS checked if relevant and undertake safeguarding training. We currently have 23 people with DBS checks and 33 people who have undertaken safeguarding training. We are planning to further raise awareness with Safeguarding Sunday in November.

We use the Parish Dashboard to set out our safeguarding action plan and check we are up to date with requirements, and we are currently in the process of ensuring we have up to date job descriptions for all paid and volunteer roles in the church.

Safeguarding is a standing item on the PCC meetings.

- **Mission Support**

The four members of the Mission Support Group are given the responsibility by the PCC to keep in touch with, and agree the financial support for, our missionary links in the UK and abroad. We pass on news to the congregation through our church monthly newsletter and incorporate each worker/organisation in weekly prayers in church. We welcome our co-workers to speak on Sunday mornings whenever they are available. We also have a strong link with nearby All Nations Christian College and are blessed with the help and involvement of students in various aspects of church life.

- **Eco Church**

The church is working towards being eco-friendly. So far, the Church has achieved the Rocha bronze award, and we are in the process of starting the silver award. For Wild Church, we use sustainable resources as much as possible and include creation care as a foundation. We are in the process of developing a small Wild Church Garden and introducing bug hotels. Fairtrade coffee and tea are served at all church events. Fairtrade wine is used for Communion.

- **Technical Communications**

The church has a website, a presence on 'A Church near You', as well as a Facebook page and an active WhatsApp group. The latter is used interactively by many members of the congregation to share news and prayer requests.

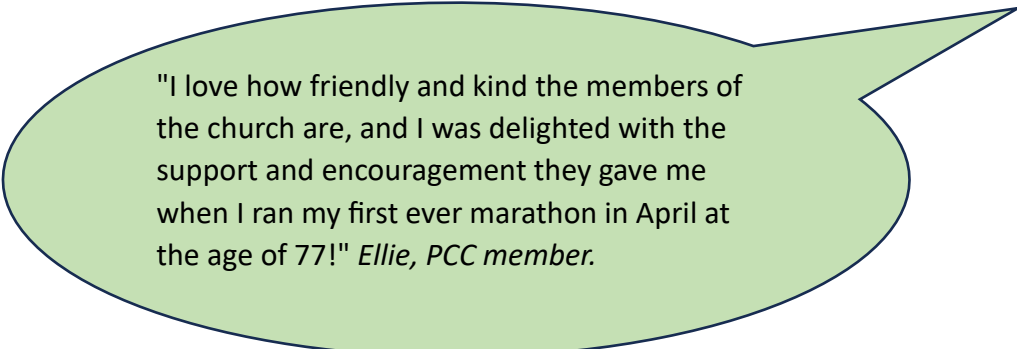
The Web and email systems are looked after by a congregation member using professional experience and working with the Church administrator under a protocol agreed by the PCC. As with most IT matters there is a need for continual development. During months of Covid 'lock down' many regular services and prayer meetings were streamed from the vicarage or, in later days from the church. This was discontinued in September 2023.

The church interior has a sound system and a number of monitors. The latter are used to display relevant materials to involve congregations, including hymn words and sermon illustrations.

THE CHURCH AND THE COMMUNITY IT SERVES

- **Social Events**

There are various social events throughout the year to enable people to get to know each other better. Bring and Share lunches are held about 4 times a year. The Catering Team organises refreshments after the "big" services such as Remembrance Sunday and the Carols by Candlelight services. The church also takes part in the town centre events organised by Love Hoddesdon by offering refreshments in the church building and activities for the children. In the past 2 years the church has put on family events to celebrate the Jubilee and Coronation. The Bell-a peal team and the Mothers Union arrange several events each year including Quiz Nights, Concerts and Garden Parties.



"I love how friendly and kind the members of the church are, and I was delighted with the support and encouragement they gave me when I ran my first ever marathon in April at the age of 77!" *Ellie, PCC member.*

- **Mothers' Union**



Mothers' Union meets monthly on Tuesday afternoons for worship, discussion and to hear speakers. The membership stands at 20 members although all are welcome to attend meetings. The branch is active in fundraising for various MU projects across the world. Recently a craft group has started also meeting monthly which again is open to all.

- **World Day of Prayer (formerly Women's World Day of Prayer)**

The church has a representative for the local planning group for the local World Day of Prayer Services and we host a service and lunch every 4 years.

- **Tuesday Group**

The Tuesday Group is mainly for the over 50s and meets on the 3rd Tuesday of the month in the Barclay Hall from 10 – 11.30am. After a 'Thought for the day' and prayers, we welcome an outside speaker or have various "in-house" activities. Since Covid, the group averages 20 members, from the church and local communities in Broxbourne, Hoddesdon, and Ware.

Members also attend the lunch club and join a day outing with Mothers' Union members in the summer.

- **Holiday at Home**

Holiday at Home has been running for over 15 years to provide a safe inclusive sociable place for over 60s who have vulnerabilities that mean a 'normal' holiday would be difficult. We provide a cooked

meal, activities, speakers and a day trip over 4 days and 2 afternoon teas every year. The most important thing is that people feel like it's a break from their routine.

- **Lunch Club**

The Lunch Club meets monthly with around 40 attending. An inexpensive meal is prepared by church members. Guests are mainly aged over 60 and drawn from our own church and the wider community.



- **Gardening group**

The Church gardening group meet every 3rd Saturday to maintain and clear up the gardens. Timing is flexible between 9.30 and 12. It is very much a social group as we always make time for a coffee and cake break and a natter.

- **Bell-A-Peal**

The Bell-A-Peal Project was officially launched in July 2015 to raise money (from a variety of fundraising events) for the refurbishment and renovation of our church bells and the bell tower, in great need of internal improvements as well as external restoration.

- **'The Newsletter' - Church Magazine**

'The Newsletter' is published 10 times a year (with double issues for July-August and December-January). An electronic version is sent to everyone with e-mail on the Church Electoral Roll. It is also distributed by post or personally to 160 recipients, 87.5% of whom do not attend our - or any - church. Copies are also available in the Library and other public venues.

- **Remembrance Sunday**

On the Sunday nearest the 11th November, the Vicar leads a civic ceremony at the town's War Memorial, including an Act of Remembrance at 11am. This is attended by local dignitaries, members of the Army Cadet Corps and Air Cadets, war veterans, other uniformed youth groups such as Scouts, Girl Guides, Brownies etc, local schools and other public bodies. Increasingly popular, several hundred members of the public are also in attendance. This is followed by a shortened service in church.

- **Church celebrations**

We celebrated the late Queen's Platinum Jubilee in June 2022 with 'Happy and Glorious' - a 3-day open church event: the church interior was transformed into an 'exhibition centre' for art, craft and dance displays by community and church groups and our church school; families enjoyed 'Wild Church' activities in the churchyard.

We celebrated King Charles' Coronation in May 2023 with more 'Wild Church' activities for families in the churchyard; many followed an interactive 'Trail of Treasures' around the church interior - finding objects and answering questions.

In June 2024, we plan to hold another exhibition - 'Celebration of Creativity' - to connect with Love Hoddesdon's 'Midsummer Festival'.



- **Bell-ringing**

The eight John Warner Bells, founded in 1901 for the Bell Tower, were the gift of the Hoddesdon Christie Brewing family. The Bells are rung regularly for weekly Sunday Services, Weddings, Remembrance Sunday, Funerals and national events (including the late Queen's Funeral and King Charles' Coronation). They are also rung for Eastern District and Herts County Association practices including training and Peal Ringing attempts.

The Ringing Team (age range 12 to 82 years) comprises 5 Church members and 3 training Ringers, under the Tower Captain's instruction and supporting member Ringers of the Eastern District; the Team is often augmented by Great Amwell and Broxbourne Ringers. Two Ringers with Aspergers and Autism have successfully completed their training to achieve a good level of Change Ringing competence.



- **The Rainbow Mosaic**

Through the summer of 2021 we worked on a project to rejuvenate the open space at the back of the church building with a mosaic, a rainbow to mark God's faithfulness during the hard times of the pandemic. It was designed to involve as many people as possible in the construction and we held regular sessions throughout that summer at which church members, friends, and other users of the building joined forces to complete the 80 mosaic panels. Highlights were sessions involving the mayor, local schools and the team from the Vaccination Centre that had been operating in the church hall. The project was supported by Love Hoddesdon, the town business organisation, and many shops took part in a linked trail to spot knitted rainbows in their windows.

The mosaic was blessed by Bishop Michael at a service in the Spring of 2022 to which many of those involved came along



'I have appreciated the way the church has engaged the local community in creative activities like the Rainbow Mosaic in the church garden'.
The Mayor of Broxbourne

THE CHURCH, BUILDINGS AND RESOURCES

- The church building.



The Nave was built in 1732 and can seat 110, there is a gallery where the Organ is situated, with addition seating for a further 24 people. Under the gallery is a foyer with informal seating and notice boards. The chancel, transepts, Church office and Bell tower are Victorian built in the 1860s. The North and South transepts can seat another 100. In the South transept there is a Chapel.

The Church was reordered in 1976 creating a multi-purpose performance area at the East end. An Extension to the North side of the Church was completed in 2012, and includes a kitchen, three meeting rooms and a disabled toilet.

A faculty has been obtained, to remove all but four of the Pews, and replace them with chairs. The type of chair to replace the pews has been chosen by the congregation, and the process of disposal of the pews is being investigated.

There is a maintenance team which carries out repairs on the Church, grounds and the 2 halls as and when required.

The last Quinquennial was undertaken in July 2020 and reported that the Church is in a good condition and had no major concerns. Most of the work that was identified as requiring attention has been completed or will be done in the near future.

- Church Halls

Next to the church are two well-maintained halls, one two-storey building (The Hunt Room) and one single storey (Barclay Hall). The halls were redecorated in 2020 and are a good source of

church income. There is a small car park for church users with disabled car parking spaces. The halls serve the community well, used by a total of 15 regular hall hirers for Children's groups, dance and drama classes, dementia groups, U3A, Hoddesdon and Broxbourne Primary Care Network and Fitness Classes in conjunction with Broxbourne Borough Council. They are also used for our own purposes such as PCC meetings, toddler groups and the occasional celebration and 'bring and share' lunch. The community makes use of the halls for private celebrations. The Broxbourne Winter Night Shelter was set up in the Barclay Hall during the winter months one night a week in 2019. During 2020/21 The Barclay Hall hosted the first Covid Vaccination Centre in Hertfordshire, vaccinating over 35,000 patients.

- **The Vicarage**

The vicarage is a large modern four-bedroom detached house in a pleasant road about half a mile from the church with an easily maintained garden.

Ground Floor, Entrance Hall, Stairs to First Floor, Storage Cupboard, Cloakroom, Lounge, Dining Area, Kitchen - with Dining Area. The Vicar's Study is self-contained with Cloakroom and External access via a separate front door; internal access via a door from the Kitchen which also gives access to the internal garage door and utility room.

First Floor Master Bedroom with ensuite, Bedrooms 2, 3 and 4, served by family Bathroom. The house is in reasonable decorative order throughout.

Front garden - laid mainly to lawn, some shrubs and a raised flower bed.

Back garden - lawn and raised flower beds; some shrubs, small patio. Attached Garage.



- **The curate's house**

In 2008 the church purchased a modern 3/4 bedroom terraced town house with integral garage, for a Curate. This is currently rented out.

FINANCIAL RESOURCES.

1. Total Income & Total Expenditure	2022
Income	£160,629
Expenditure	£173,039
2. Giving & Gift Aid recovered	
Planned Giving	£62,555
Collections at Services	£1,630
All other giving	£4,289
Gift Aid recovered	£16,820
3. Planned Giving & Planned Givers	
Weekly average Planned Giving per Planned Giver	£1,137
Number of Planned Givers	55
4. Income Analysis	
Total Giving	£68,474
Fundraising	0
Trading	£41,483
Gift Aid recovered	£16,820
PCC Fees	£2,861
Other income	£30,991

5. Expenditure Analysis	
Mission Giving & donations	£11,073
Parish Share paid	£65,297
Salaries & Expenses	£38,086
Church running expenses & utilities	£28,693
Other Expenditure	£29,890
6. Legacies, Grants & Capital Expenditure	
Legacies	0
Grants	£11,676
Capital Expenditure	0
7. Unrestricted & Restricted Reserves	
Unrestricted	£101,338
Restricted	£356,240

Notes:

1. The Church has always met its Parish Share in full.
2. The PCC has set a requirement for the Mission Giving to be 15% of the Pledged Giving plus the associated Gift Aid. That target has been achieved in 2023.